



**GEDA**<sup>®</sup>  
ORIGINAL

# Over- coming challenges in scaffolding

[scaffold.geda.de](http://scaffold.geda.de)



## Did you know?

*The GEDA 300 Z Boiler Hoist can do more than its name suggests:*

- There is much more to the name 'Boiler Hoist' than meets the eye
- The only hoist to run inside the scaffold structure
- Versatile and suitable for use in a wide range of industries
- From boilers to room scaffolding: a true all-rounder





## Our response to narrow tight points

Proven in  
industry – the  
solution for all tight  
access points!

### **GEDA®** 300 Z BOILER HOIST

The new benchmark for confined construction sites and industrial facilities

The **GEDA 300 Z Boiler Hoist** – unique as a fully dismantlable scaffolding hoist – is indispensable not only in industrial environments, but also on all types of space scaffolding. Whether in silos, blast furnaces, combined heat and power plants, boilers or other projects: all components fit through openings with a diameter of only 45 cm, enabling use even in extremely confined access areas.



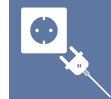
300 kg



100 m



25 m/min



400 V/50 Hz



# WHAT

challenges do  
you deal with?



The sector deals with a wide variety of challenges on a daily basis. The right tools can help solve some of the problems the sector faces.

GEDA scaffolding hoists are versatile, quick to assemble and the scaffolding material is transported up and down quickly and safely.

Moreover, reducing employee workload pays off in many areas.



Shortage of skilled & unskilled workers

Occupational health & safety

Human resources & health topics

Logistics & transport of material

Efficiency & cost-effectiveness

... free up resources!

... generate extra orders!

**... increase effectiveness!**

... are extremely quick!

... are always available!

... are funded on a country-specific basis!

... comply with all regulations!

**... reduce the risk of accidents!**

... can earn money for you!

**... don't get tired!**

... don't need a break!

... are simple and comprehensible!

**... speak all languages!**

**... are good for your health!**

... defy wind and weather!

... reduce work-related illnesses!

... don't drop out of their training!

**... don't need holidays!**

... don't change their line of work!

... know what they have to do!

**... don't receive wages!**

... pay for themselves!



# WHY

## scaffolding hoists?

WHY scaffolding hoists?



**GEDA**<sup>®</sup>  
O R I G I N A L

# HOW can GEDA help?

Wind and bad weather are no problem at all for GEDA scaffolding hoists. Thanks to their high quality „made in Germany“, the hoists have become extremely popular in the scaffolding industry. You won't find anything comparable manufactured and sold to these standards on any construction site. In the construction sector, the

name GEDA has been synonymous with competence, safety and reliability for over 90 years. Every day, our 560 employees are available to help you find the right hoist solution for you. Find out what makes us unique and discover the difference!



All GEDA devices comply with the respective country-specific standards!



**GEDA®**  
MINI 60 S



**GEDA®**  
MAXI 120 S



**GEDA®**  
MAXI 150 S

HOW can GEDA help?

 **NEW**



**GEDA®**  
200 Z



**GEDA®**  
200 Z COMFORT



**GEDA®**  
300 Z

**GEDA®**  
MINI 60 S  
MAXI 120 S  
MAXI 150 S

**Great value  
for little money!**



**Unguided &  
ground-based**

Our speedy  
lightweight

**GEDA®**  
MINI 60 S



60 kg



max. 70 m



23 m/min /  
69 m/min



0.25 kW / 0.75 kW /  
230 V / 50 Hz / 16 A

Our  
all-rounder

**GEDA®**  
MAXI 120 S



120 kg



max. 70 m



20 m/min /  
60 m/min



0.45 kW / 1.35 kW /  
230 V / 50 Hz / 16 A

Our  
power pack

**GEDA®**  
MAXI 150 S



150 kg



max. 70 m



15 m/min /  
45 m/min



0.45 kW / 1.35 kW /  
230 V / 50 Hz / 16 A

SUITABLE FOR ANY SCAFFOLD

GEDA Swivel arm  
Art. No. 05711

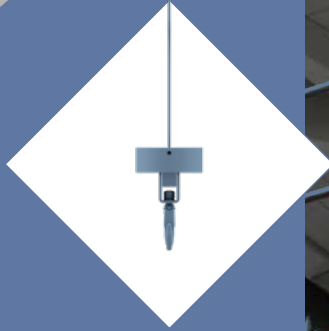


Approx. 15 kg of  
scaffolding material

Swivel arm for  
mounting on the  
topmost scaffolding  
level

The GEDA Mini 60 S  
can easily transport  
**60 kg**, quickly  
and safely.

GEDA Universal rotary arm  
Art. No. 01267



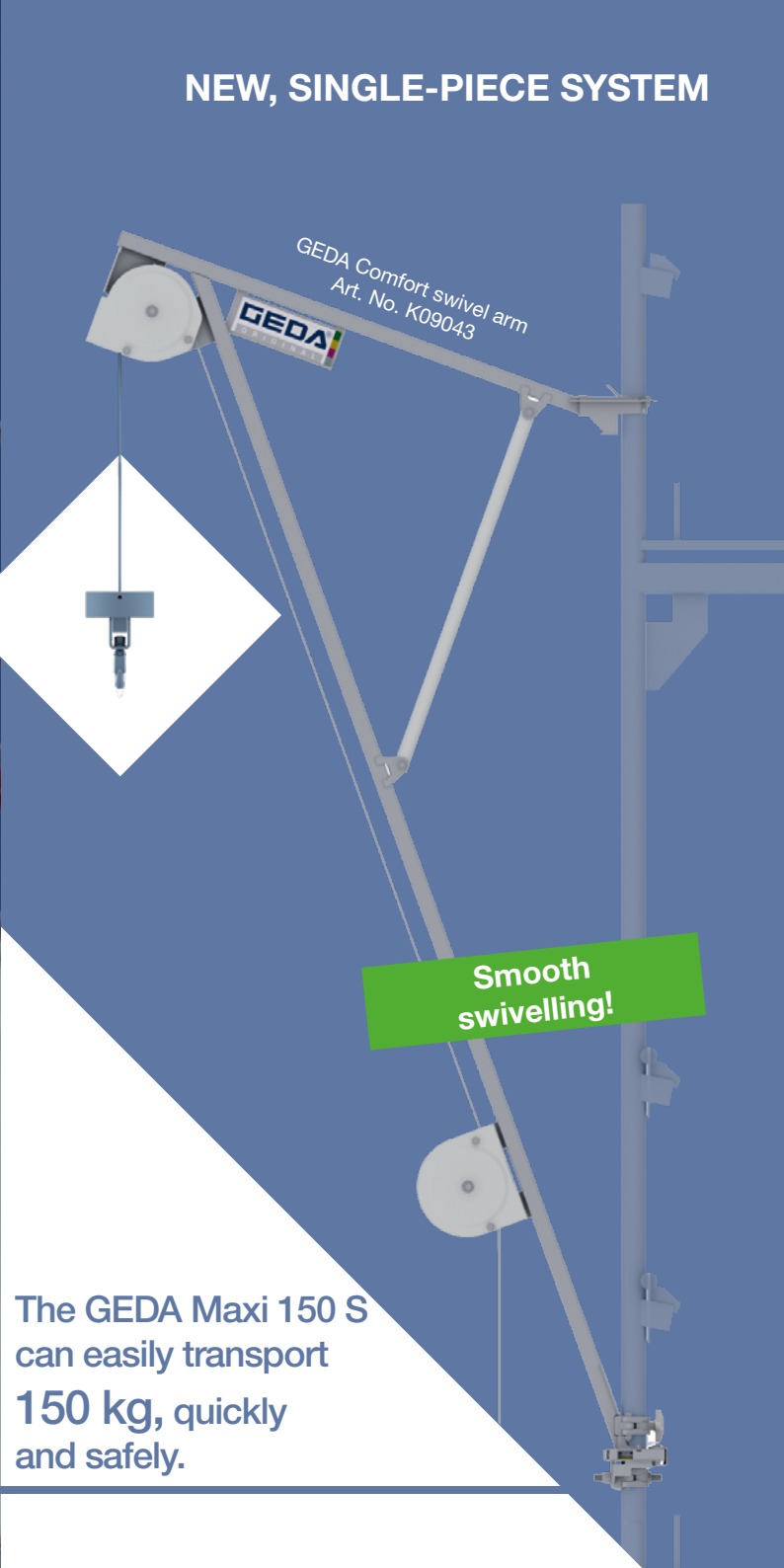
Swivel arm for mounting  
at any scaffolding  
position

The GEDA Maxi 120 S  
can easily transport  
**120 kg**, quickly  
and safely.



Approx. 25 kg of  
scaffolding material

NEW, SINGLE-PIECE SYSTEM



GEDA Comfort swivel arm  
Art. No. K09043



Smooth swivelling!

 **NEW**

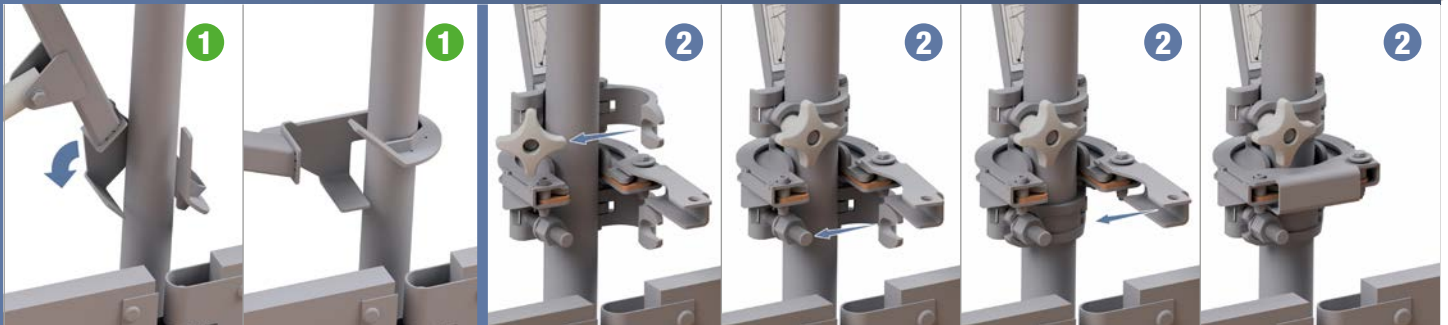
The GEDA Maxi 150 S  
can easily transport  
**150 kg**, quickly  
and safely.

## ACCESSORIES – IN USE

- Easy storage and assembly thanks to a complete, one-piece system
- Innovative, newly developed swivel mechanism for optimum functionality
- Proven simple rope attachment – no tools required
- Easy assembly and handling thanks to low weight
- Compatible with the GEDA MINI / MAXI series – versatile application
- Developed for use on modular scaffolding and applicable to frame scaffolding



### Simple installation in two steps





100-  
230 V



## ACCESSORIES



**Hook tie for 5 hooks**

---



**Bucket hanger for 4 buckets**

---



**Hook**

---



**Transport trolley**

---



**Bucket hanger for 2 buckets**

---



**GEDA Remote control**

---

Further accessories  
for transporting a wide variety  
of materials can be found at  
[www.geda.de/en/](http://www.geda.de/en/)



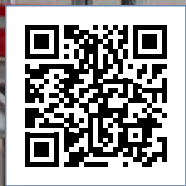
## References





**GEDA®**  
200 Z

# The compact and lightweight solution!



Our  
classic solution

**GEDA®**  
200 Z

**ALU**  
LEITER  
LADDER



200 kg



35 m



25 m/min



1.7 kW / 230 V /  
50 Hz / 16 A



Can be  
swivelled on  
both sides



- Platform swivels to both sides (unique on the market)
- Lightweight aluminium platform
- Base unit can be dismantled into 3 pieces for easy transport to the assembly site
- Approved assembly directly from the platform
- Patented quick-lock system of the ladder sections
- Quick and easy attachment to the scaffold
- Cable duct built into the ladder section
- Mobile base unit
- Minimal space required

The GEDA 200 Z can easily transport 200 kg, quickly and safely.

Compatible with  
GEDA Remote control





## References





**Safe, ergonomic &  
efficient!**



 **NEW!**

The new  
scaffolding hoist

**GEDA®**  
**200 Z COMFORT**

**ALU**  
LEITER  
LADDER



200 kg



35 m



25 m/min



1.7 kW / 230 V /  
50 Hz / 16 A



A close-up photograph of a GEDA remote control device. The device is yellow and black, with a grey faceplate featuring two directional arrows (up and down) and two green buttons labeled 'START'. It is mounted on a blue metal frame. In the background, a construction site is visible with scaffolding and a window. A white label with the GEDA logo and '200 Z' is attached to the device's base. A red emergency stop button is visible on the right side of the device's housing.

GEDA Remote control

- Optimised for modular scaffolding
- Modular and system scaffolding brackets specify the exact distances
- Simple, quick and tool-free installation of the stop bar for precise floor stopping
- Load platform (patent pending) with sliding frame for convenient loading and unloading at landing without dangerous gaps
- Easy alignment of the base unit thanks to optional scaffolding spindle holders
- Base unit with carriage, drive, spring cable reel and chassis for quick positioning on the construction site
- Compliance with the safety distance of 500 mm!
- Sturdy aluminium ramp for loading on the ground

The GEDA 200 Z Comfort can easily transport **200 kg**, quickly and safely.



Stop bar



The GEDA 200 Z Comfort can be used with the tested ECO+ landing level safety gate (Art. No. 39700) or with the new barrier (K07322)!



Ladder track fixing clamp „modular“

Thanks to well-thought-out mounting concepts, the GEDA 200 Z Comfort can be optimally attached to all common scaffolding systems.



Ladder track fixing clamp „Easy“

Ladder track fixing clamp „universal“

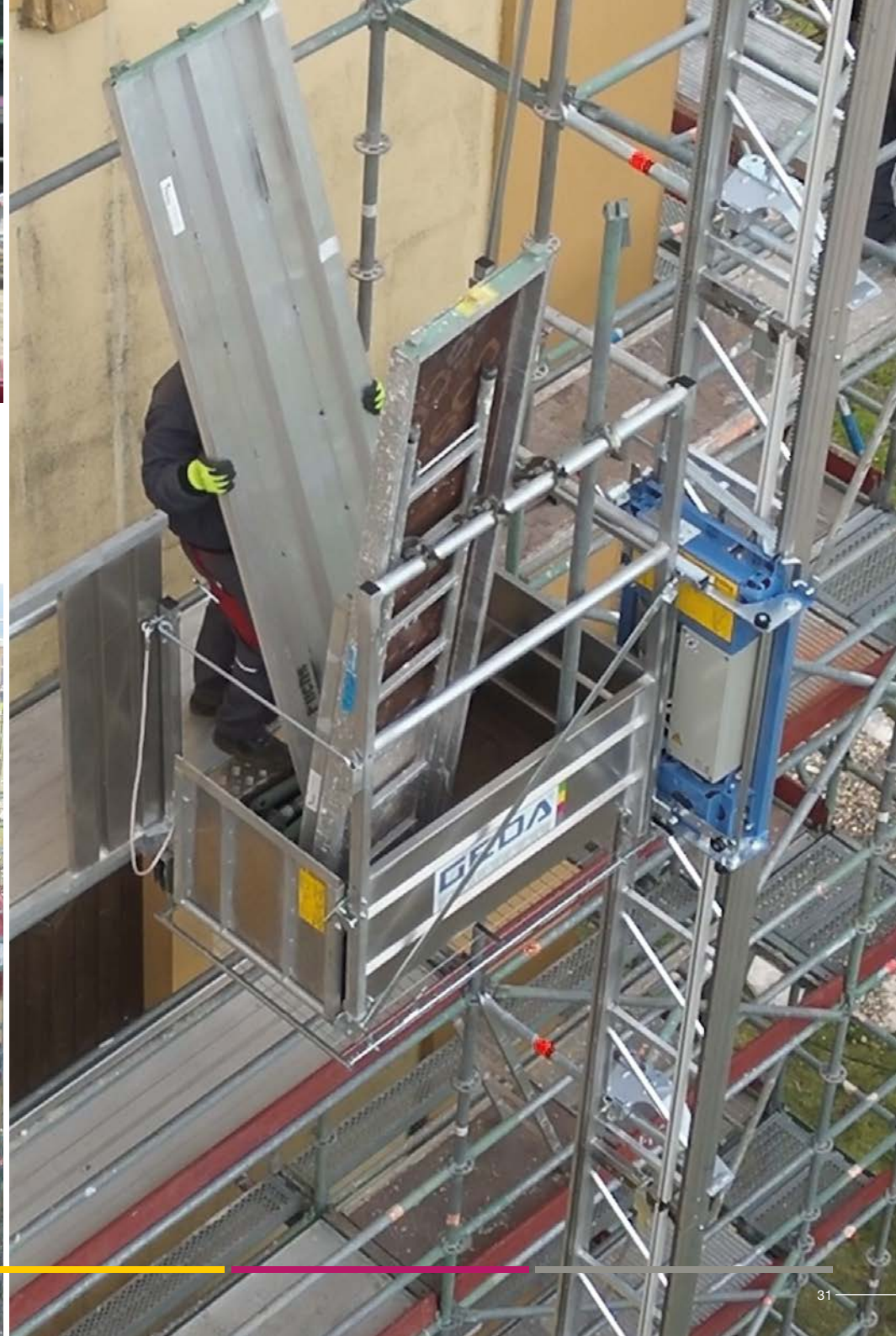


 **NEW!**



## References





**GEDA®**  
300 Z

**It doesn't get any  
more efficient than this!**



Swivelling

Our  
powerful solution

**GEDA**<sup>®</sup>  
300 Z



300 kg

300 kg



50 m

100 m



20 m/min

30 m/min



1.8 kW / 230 V /  
50 Hz / 16 A

2.5 kW / 400 V /  
50 Hz / 16 A





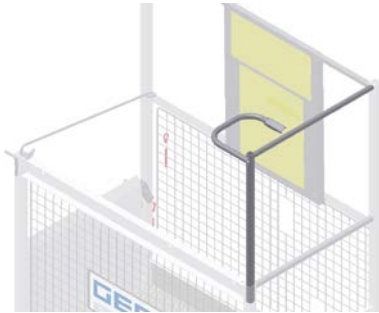
- Mast column can remain anchored to the scaffold without a base unit: Easy to use at multiple construction sites (unique on the market)
- Approved assembly directly from the platform
- Adjusting spindles for the base unit for easier alignment
- Choice of 230 or 400 volts
- Convenient transportation by single-axle trailer also for cars/lorries
- Durable due to robust „Made in Germany“ construction
- Stops automatically at the landing level
- Platform can be swivelled to the scaffolding
- Lightweight, stable aluminium mast

The GEDA 300 Z can easily transport **300 kg**, quickly and safely.



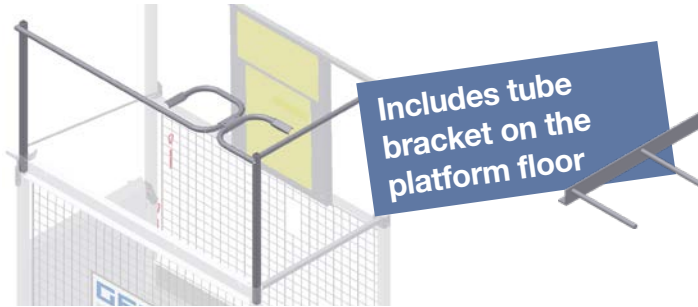
Approx. 80 kg of scaffolding material





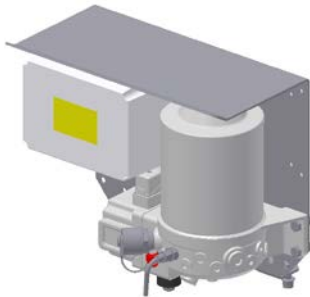
**Standard frame**

---



**Special frame**

---



**Automatic rack lubrication system**

---



**Uniaxial trailer**

---



**Shunting mechanism**

---



**Adjusting spindle**

---



**Landing level safety gate „ECO“**

---



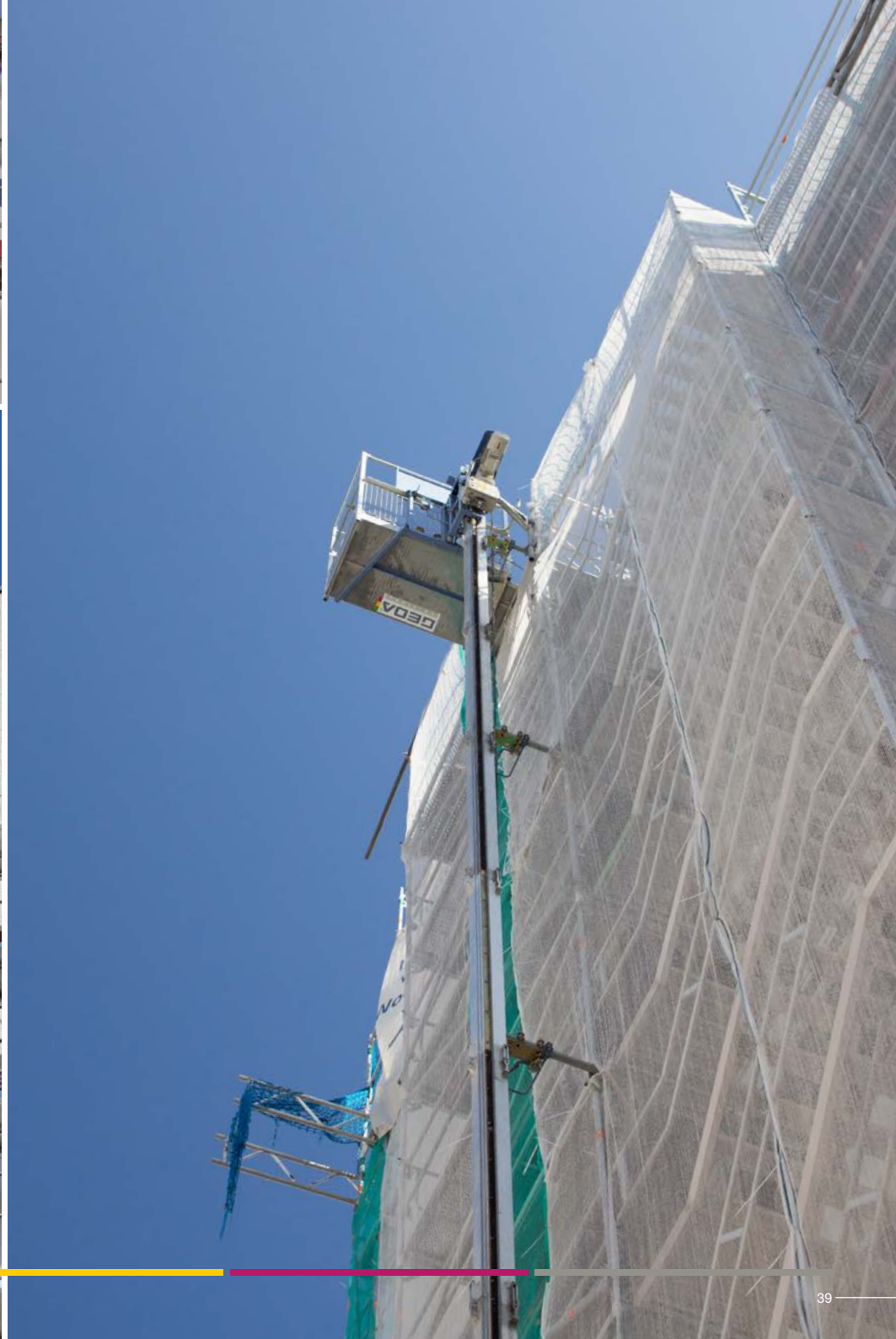
**GEDA Remote control**

---



## References





Your dealer:

**GEDA<sup>®</sup>**

O R I G I N A L

**GEDA GmbH**

Mertinger Straße 60  
86663 Asbach-Bäumenheim  
Phone +49 (0) 906 9809-0  
Fax +49 (0) 906 9809-50  
info@geda.de  
[www.geda.de](http://www.geda.de)